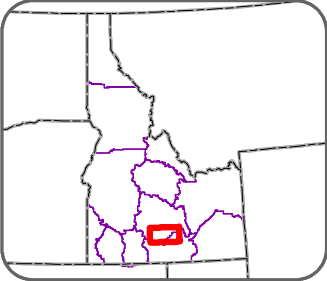
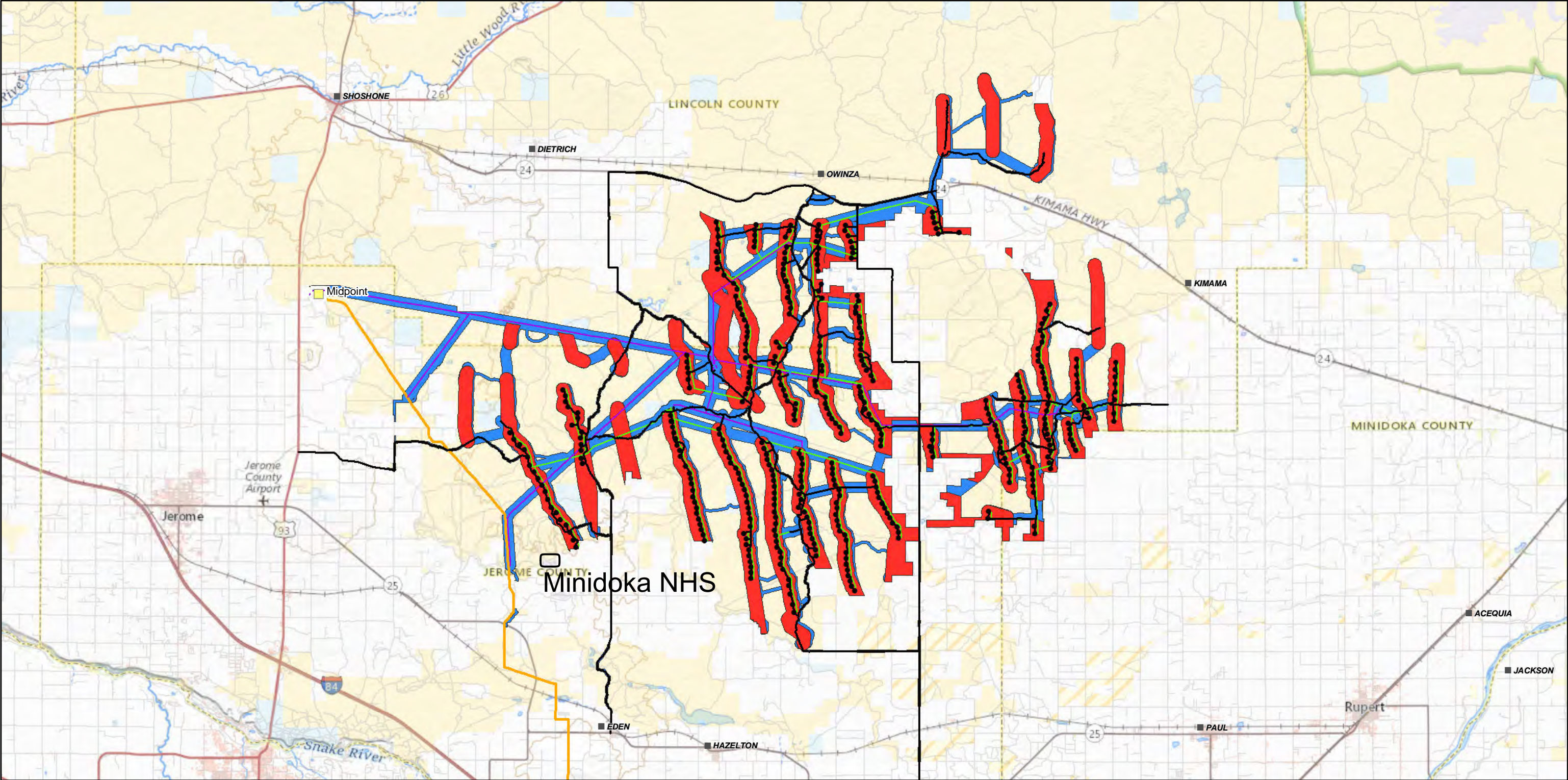


Lava Ridge Wind Project



US Department of the Interior
Bureau of Land Management
Twin Falls District, Idaho

- Turbines
- 35kV Power Line
- 230/500kV Power Line
- Roads
- SWIP Line
- Access/Powerline Corridor
- Turbine Corridor
- Existing Substations
- Bureau of Land Management
- Bureau of Reclamation
- National Park Service
- Private
- State
- State Fish and Game



**NON-PUBLIC. BLM INTERNAL USE ONLY.
NOT FOR DISTRIBUTION.**
The User should take reasonable measures to ensure that these data are protected from disclosure. The User assumes the entire risk associated with its use of these data. The BLM shall not be held liable for unintentional disclosure, nor for any use or misuse of the data described or contained herein. The User bears all responsibility in determining whether these data are fit for the User's intended use.



1:225,000